



Andrew Morse

Managing Director
PFC

PFC

Andrew Morse



Managing Director

ptc.

ptc.

example

Parking for residents

One space per unit up to two bedrooms
(including studio or bed-sitter units)

Two spaces per three or more bedroom unit.

Parking for visitors

One space per five units

example

Parking for residents

One space per unit up to two bedrooms
(including studio or bed-sitter units)

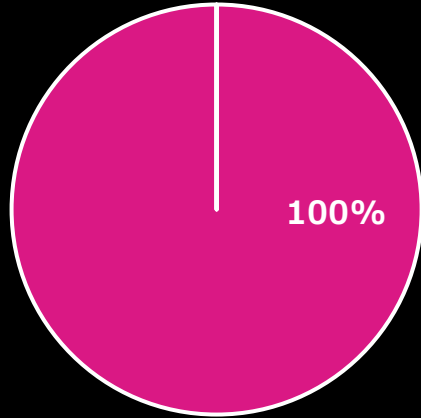
Two spaces per three or more bedroom unit.

Parking for visitors

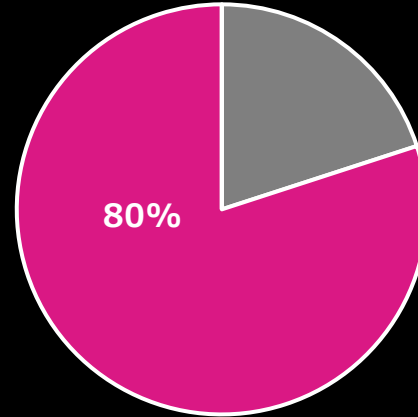
One space per five units

20% of
residents of this
area don't own a car

supply v demand

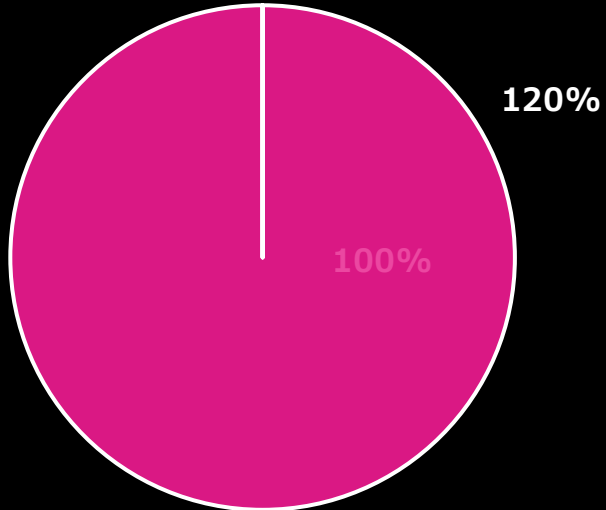


Planning Controls

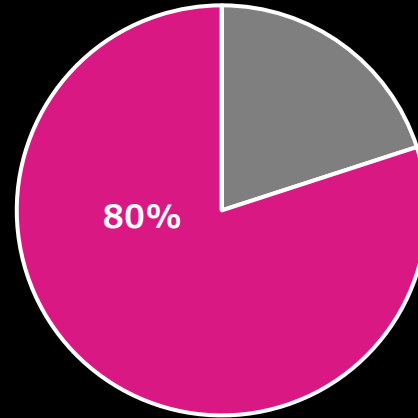


Demand

supply v demand

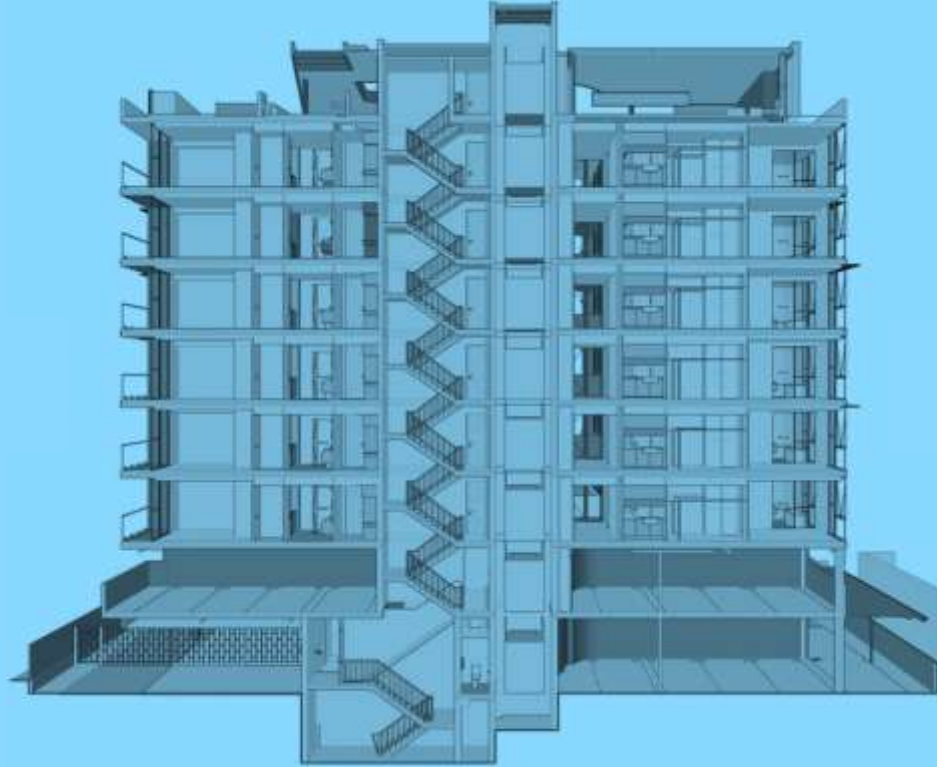


Planning Controls



Demand

residential apartments



cost of parking

2021 car park construction costs

The cost to build a car park in Australia varies significantly according to the city (cost range per gross floor area – \$/m²):

- Open Deck Multi-Storey: \$650 to \$1,500
- Basement (CBD): \$1,060 to \$3,100
- Basement (Other than the CBD): \$950 to \$2,800
- Undercroft (Other than CBD): \$580 to \$1,200

cost of parking

2021 car park construction costs

The cost to build a car park in Australia varies significantly according to the city (cost range per gross floor area – \$/m²):

- Open Deck Multi-Storey: \$650 to \$1,500
- Basement (CBD): \$1,060 to \$3,100
- Basement (Other than the CBD): \$950 to \$2,800**
- Undercroft (Other than CBD): \$580 to \$1,200

cost of parking

32m per parking space

32 x 2800 =

cost of parking

32m per parking space

32 x 2800 =

\$89,600

cost of parking

\$89,600

ptc.

cost of parking

**20% of 50 apartments
would be 10 spaces =
\$896,000**

voluntary planning agreements (VPA)

A voluntary planning agreement (VPA) is an agreement entered into by a planning authority and a developer to enable a broader range and extent of development contributions to be realised from the planning and development assessment process.

Under such agreements the developer is required to dedicate land free of cost, pay a monetary contribution, or provide any other material public benefit, or any combination of them, to be used for or applied towards a public purpose.

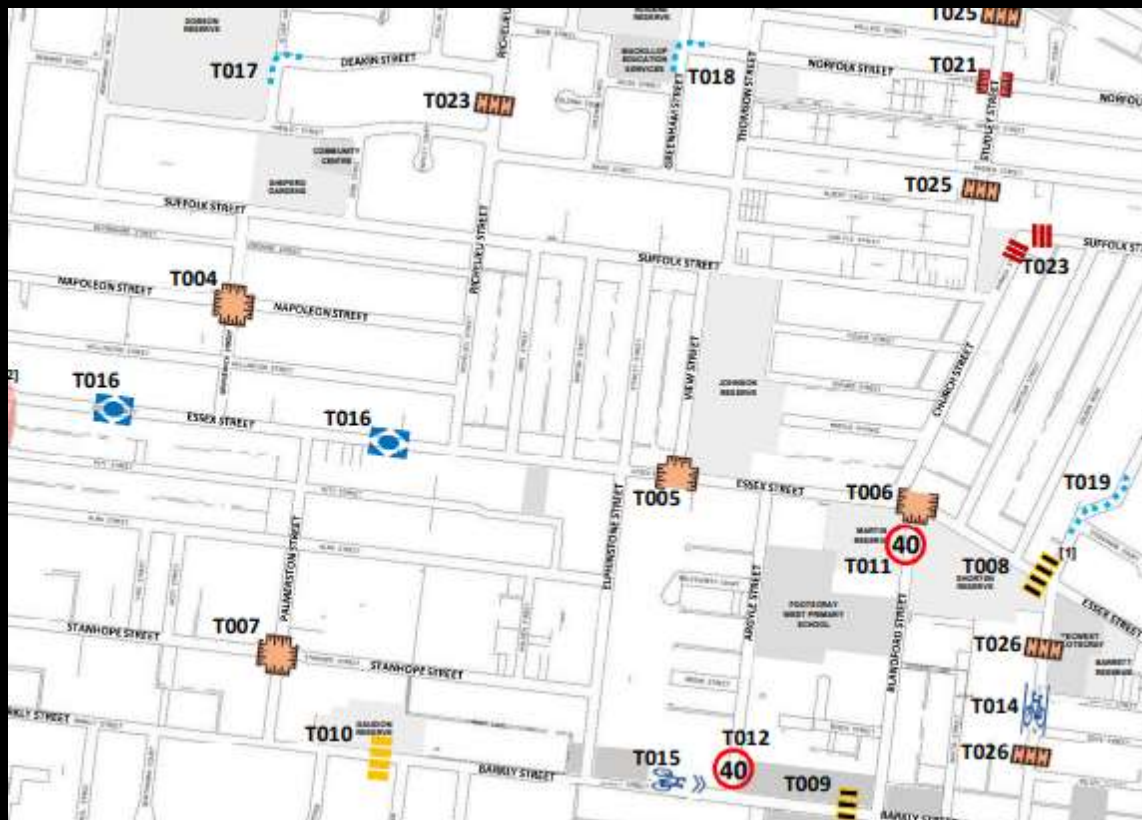
cost of infrastructure



cost of infrastructure



local area traffic management (LATM)



better investment

**Let's get money out of the
basement and on to our streets**

ptc.



questions?

CF

ptc.



Andrew Morse
+61 2 8920 0800
andrew.morse@ptconsultants.co

 ptconsultants.co

 [ptc.](#)

 [@instaptc](#)

thank you;
ptc.